

Cancer care at the highest level, anywhere – right here in Texas.



BROADWAY LIKE YOU'VE never HEARD IT BEFORE!



NCI-designated Comprehensive Cancer Centers are among the most advanced in the world.

Fortunately, you don't have to go far to find one. UT Southwestern is the only NCI Comprehensive Cancer Center in North Texas. More than 200 members from over 30 departments provide over a dozen major cancer care programs that advance the treatment and prevention of cancer.

UT Southwestern physicians and scientists conduct laboratory research, clinical research, and population-based research, leading to new drugs and treatments aimed at improving patient care, and ultimately saving lives. If you or a loved one is facing cancer, you want the most innovative treatments, leading-edge research, and the latest technology. You want cancer care at the highest level – UT Southwestern Harold C. Simmons Comprehensive Cancer Center.

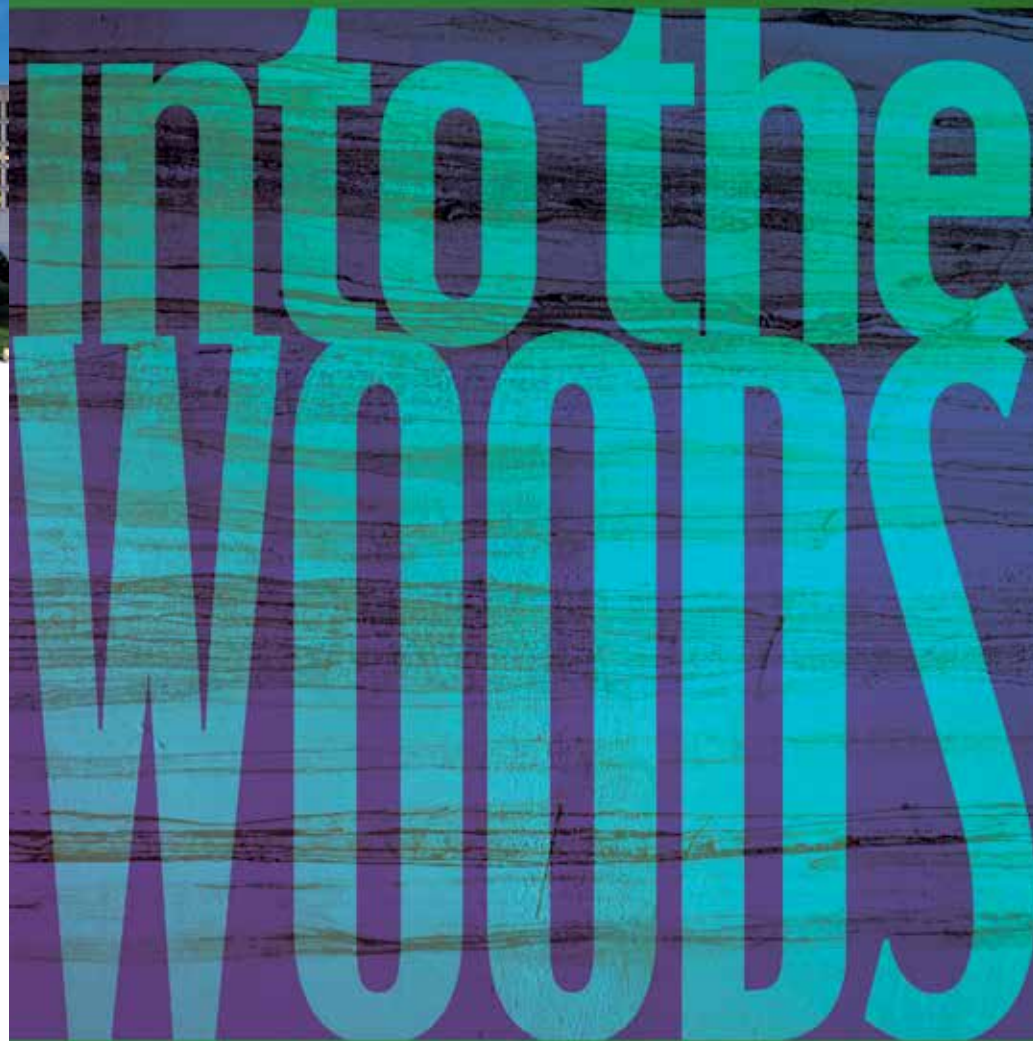
UT Southwestern
Simmons Cancer Center

The future of medicine, today.



A Comprehensive Cancer Center Designated by the National Cancer Institute

To find out more about the benefits of an NCI-designated Comprehensive Cancer Center, go to utswmedicine.org/NCI.



September 4–13 2015
Carpenter Hall at Irving Arts Center



Steven Jones, Founding Producer
presents

INTO THE WOODS

Music and Lyrics by **STEPHEN SONDHEIM**

Book by **JAMES LAPINE**

Orchestrations by **JONATHAN TUNICK**

Original Broadway production produced by

HEIDI LANDESMAN ROCCO LANDESMAN RICK STEINER
M. ANTHONY FISHER FREDERIC H. MAYERSON JUJAMCYN THEATERS
Originally produced by the Old Globe Theater, San Diego, Ca.

with

CATHERINE CARPENTER COX* MARY GILBREATH GRIM ANDY BALDWIN*
MARY McELREE* CHRISTOPHER J. DEATON* JAMES WILLIAMS ANTHONY FORTINO
KYLE MONTGOMERY ANGELA DAVIS AMY BUTTON KELLY SILVERTHORN

LUCIA WELCH DANIELLE ESTES DARON COCKERELL CHELSEA COYNE
SETH WOMACK JOHN WENZEL JAD SAXTON EMMA COLWELL

Lighting Design
JULIE N. SIMMONS

Sound Design
BILL EICKENLOFF

Costume Coordinator
DRENDA LEWIS

Costume Design
NANCY MISSIMI

Production Stage Manager
JACK DEGELIA*

Set Design
PAUL WONSEK
originally designed and built for Pittsburgh CLO

Director
HARRY PARKER

Music Director/Conductor
JAY DIAS

*Member of Actors' Equity Association

Into The Woods
Is presented through special arrangement with Music Theatre International (MTI).
All authorized performance materials are also supplied by MTI.
421 West 54th Street, New York, NY 10019
Phone: 212-541-4684 Fax: 212-397-4684
www.MTIShows.com

CAST OF CHARACTERS

Narrator	JAMES WILLIAMS
Cinderella.....	MARY MCELREE*
Jack.....	KYLE MONTGOMERY
Baker.....	ANDY BALDWIN*
Baker's Wife.....	MARY GILBREATH GRIM
Cinderella's Stepmother	LUCIA WELCH
Florinda	DANIELLE ESTES
Lucinda.....	DARON COCKERELL
Jack's Mother	ANGELA DAVIS
Little Red Ridinghood.....	AMY BUTTON
Witch.....	CATHERINE CARPENTER COX*
Cinderella's Father.....	JOHN WENZEL
Cinderella's Mother.....	CHELSEA COYNE
Myterious Man	JAMES WILLIAMS
Wolf.....	CHRISTOPHER J. DEATON*
Rapunzel	KELLY SILVERTHORN
Rapunzel's Prince	ANTHONY FORTINO
Grandmother	CHELSEA COYNE
Cinderella's Prince.....	CHRISTOPHER J. DEATON*
Steward	SETH WOMACK
Giant.....	CHELSEA COYNE
Snow White	JAD SAXTON
Sleeping Beauty.....	EMMA COLWELL

Director	HARRY PARKER
Music Director/Conductor.....	JAY DIAS
Production Stage Manager.....	JACK DEGELIA*
Assistant Stage Manager	SHANE PETERMAN*
Rehearsal Pianist.....	DON POWERS
Sound Design.....	BILL EICKENLOFF
Light Design	JULIE N. SIMMONS
Costume Coordinator	BRENDA LEWIS
Costume Design.....	NANCY MISSIMI
Set Design.....	PAUL WONSEK, originally designed and built for Pittsburgh CLO
Props.....	KRISTIN M. BURGESS

*Member of Actos/Equity Association

MUSICAL NUMBERS

ACT I

Prologue: "Into the Woods"	Company
"Hello, Little Girl"	Wolf, Little Red Riding Hood
"I Guess This Is Goodbye"	Jack
"Maybe They're Magic".....	Baker's Wife
"I Know Things Now"	Little Red Riding Hood
"A Very Nice Prince"	Cinderella, Baker's Wife
"Giants In the Sky"	Jack
"Agony".....	Cinderella's Prince, Rapunzel's Prince
"It Takes Two"	Baker, Baker's Wife
"Stay with Me"	Witch
"On the Steps of the Palace"	Cinderella
"Ever After"	Narrator, Company

ACT II

Prologue: "So Happy"	Company
"Agony".....	Cinderella's Prince, Rapunzel's Prince
"Lament"	Witch
"Any Moment".....	Cinderella's Prince, Baker's Wife
"Moments in the Woods"	Baker's Wife
"Your Fault"	Jack, Baker, Witch, Cinderella, Little Red Riding Hood
"Last Midnight"	Witch
"No More"	Baker, Mysterious Man
"No One Is Alone"	Cinderella, Little Red Riding Hood, Baker, Jack
Finale: "Children Will Listen"	Witch, Company

GRAND HOTEL

LYRIC STAGE

Book by Luther Davis;
music & lyrics by Robert
Wright & George Forrest;
additional lyrics & music
by Maury Yeston

For tickets
972-252-2787
lyricstage.org

Oct 30 - Nov 8 2015



ANDY BALDWIN (*Baker*) has performed and directed all over the metroplex including Circle Theatre, Stage West, Lyric Stage, Theatre Three, WaterTower and Casa Mañana. Andy spent eight years as a Resident Actor at Casa Mañana, and also studied at Circle in The Square Theatre Conservatory on Broadway.



AMY BUTTON (*Little Red Ridinghood*) Lyric Stage debut! National Tour: *The Wizard of Oz* (Troika Entertainment) Regional: *South Pacific* (CityRepOKC) OCU: *BatBoy* (Shelley), *110 in the Shade* (Snookie), *The Pajama Game* (Mae). Proud Oklahoma City University graduate. Love & thanks to Mom, Dad, Jeff, Harry Parker, & Jay. For Maryann.



EMMA COLWELL (*Sleeping Beauty*) previously seen at Lyric in *The Sound of Music* (Louisa Von Trapp) and *Fiddler on the Roof* (*Bluma*), and in *Snow White and the Prince* (Snow White) and *Peter Pan* (Wendy) at Casa Mañana. Emma would like to thank God, Mr. Jones, and Mr. Dias.



DARON COCKERELL (*Lucinda*) is thrilled to go into the woods with this great group of people! Previous Lyric shows: *Annie Get Your Gun* (Annie Oakley) *The Desert Song* (Susan), *Too Many Girls* (Eileen), *The Music Man*, *The Most Happy Fella*. Other recent shows: *Curtains* (Mainstage), *Les Miserables* (Casa Mañana), *Shrek* (Plaza Theatre Company), *Bonnie & Clyde* (WaterTower), *Assassins*, (Theatre Three). TCU graduate.



CATHERINE CARPENTER COX* (*Witch*) is a native Bostonian who lived and worked in NYC for 10+ years! LYRIC credits: *Evita* (Eva), *Celebration*, *Hello Dolly!* (Irene), *Look Homeward Honky Tonk Angel*, *Bye Bye Birdie* (Rosie), *Oliver* (Nancy), *The Most Happy*

Fella(Cleo), *Nine* (Luisa), & numerous *Dallas Divas*. BFA: Tisch School of the Arts at NYU. Love to Brad and her amazing family!



CHELSEA COYNE (*Cinderella's Mother*, *Grandmother*, *Giant*) – *Cinderella* (*La Cenerentola*), *Jo* (*Little Women*), *Béatrice* (*Beatrice et Benedict*), *Carmen* (*La Tragedie de Carmen*), *Dorabella* (*Così Fan Tutte*), and *Iлона Ritter* (*She Loves Me*). Chelsea holds music degrees from CIM (MM, AD) and TCU (BM). Next, Chelsea will be the featured soprano on the Regal Princess in BRAVO.



ANGELA DAVIS (*Jack's Mother*) – Lyric Stage debut. Dallas credits: *Little Women* (Marmee, CTD); *Two Rooms* (Ellen, ProperHijinx); *Ghost Sonata* (Concierge, Undermain); *Joyce's Ulysses* (Molly Bloom, Undermain Reads/DMA); *Albert's Anthology* (Margaret, Theatre Britain). Regional credits include *Macbeth*, *King Lear*, *Stop the World...!*; *The Philadelphia Story*, and *Story Songs*, directed by Betty Buckley. BFA, Webster University.



CHRISTOPHER J. DEATON* (*Cinderella's Prince/Wolf*): 60+ regional credits, including *The Golden Apple*, *The Desert Song*, *The Human Comedy*, and *Lady in the Dark* with Lyric Stage. Proud member of Actors' Equity Association since 2005. G.M. of *Rudolph the Red-Nosed Reindeer: The Musical* (Tour), and V.P. of *Wishing Star Productions, LLC*. TTMB. For mom.



DANIELLE ESTES (*Florinda*) is thrilled to work with Lyric Stage! A graduate from Oklahoma City University, Danielle's previous Lyric Stage roles include *Helen* in *The Golden Apple*, *Carla* in *Nine*, *Sura* in *Pleasures and Palaces*, and *Gertie* in *Oklahoma*. She would like to thank her family and friends for their continuous love and support.



ANTHONY FORTINO (*Rapunzel's Prince*) is excited to be back at Lyric Stage. He was most recently seen as Frank Abagnale, Jr. in *Catch Me If You Can* at Uptown Players. Past Lyric Stage productions include Lt. Cable in *South Pacific*, Perchik in *Fiddler on the Roof*, and *Titanic*. TCU grad. Love to my family.



MARY GILBREATH GRIM (*Baker's Wife*) is thrilled to be back at Lyric where she has been seen as Alice Beane in *Titanic*, Mama Maddelena in *Nine*, Mother in *Ragtime*, Louise in *The Living End*, and Michal in the regional premiere of Alan Menken's *King David*. Mary has also been seen in theatres around DFW such as WaterTower Theatre, Uptown Players, Stage West, Casa Manana, and Contemporary Theatre of Dallas.



MARY McELREE* (*Cinderella*) thanks Lyric Stage yet again, for the opportunity to cross another dream role off her list! Other Lyric credits include Hodel (*Fiddler on the Roof*), Louise (*Gypsy*), Kim McAfee (*Bye Bye Birdie*). Love to Christian!



KYLE MONTGOMERY (*Jack*) – (National Tours) *Rudolph the Red-Nosed Reindeer* (Selected Regional Work) *South Pacific*, *Catch Me If You Can*, *The Boy From Oz*, *Kiss of the Spider Woman*, *The Tempest*, *The Comedy of Errors*, *The Human Comedy*, *Urinetown*, *Alexander's House*; Recent graduate from Texas Christian University (BFA in Musical Theatre).



JÁD SAXTON (*Snow White*) was in Lyric's productions of *The Golden Apple* and *Fiddler on the Roof* (Chava). Other credits include Outcry Theatre, Plano Children's Theatre, Dallas Children's Theatre's National Tour, Theatre 3, Uptown Players, and PFamily Arts. Jád also has 100-plus anime voice-over credits for FUNimation & Sentai. OJ-JJ.



KELLY SILVERTHORN (*Rapunzel*) – A recent SMU grad, Kelly is thrilled to be back at Lyric Stage. Recent credits include May in *The Kountry Girls* and Miss Foster/Sutton in *Lady in the Dark*.



LUCIA WELCH (*Cinderella's Stepmother*) is so pleased to reprise this role, this time at Lyric Stage. Other performances at Lyric: *The Sound of Music*, *Music Man*, *Rags*, *My Fair Lady*, *Showboat*, *The King and I*. She has also been seen on other area stages including Water Tower Theatre, Theatre Three, Contemporary Theatre, Pocket Sandwich and Main Stage Irving Las Colinas.



JOHN WENZEL (*Cinderella's Father*) is glad to be back for his third production with Lyric after appearing in *Annie Get Your Gun* and *South Pacific* earlier this year. A masters graduate of Texas Tech in Vocal Performance, John's other DFW credits include Jean Valjean in *Les Miserables* (OhLook), *Urinetown* (Theatre Arlington) and *Phantom* (ICT Mainstage).



JAMES WILLIAMS (*Mysterious Man/Narrator*) Last seen as Buffalo Bill in *Annie Get Your Gun*. Favorites @ Lyric: *Phantom*, *Ragtime*, *The Fantasticks*, *Evita*, *Fiorello*, *Gypsy*, *Kismet*, *Oklahoma*, *1776*, *The Desert Song*, *Titanic*. Love to Jake, sidekick Connor, and Kristen Beth, soon to be in the national tour of *Gentleman's Guide to Love and Murder*.



SETH WOMACK (*Steward*) is excited to be returning to the Lyric stage after having previously been seen in *Fiddler on the Roof*, *The Golden Apple*, and *Lady in the Dark*. Other regional productions include *Les Miserables* (DTC/Casa Mañana) and *The Spark* (WaterTower).

* Member of Actors' Equity Association

* Member of Actors' Equity Association

HARRY PARKER (*Director*) is a Professor and Chair of the Department of Theatre at TCU. He has directed more than 100 professional and university plays and musicals, including productions at the Kennedy Center (Washington, D.C.), Stages Repertory Theatre (Houston), American Heartland Theatre (Kansas City), and Lyric Theatre of Oklahoma and CityRep (both Oklahoma City). In Dallas-Fort Worth, his professional directing credits include *Vanya and Sonia and Masha and Spike* at Stage West, *Hunting and Gathering* for Amphibian Stage Productions, *Company* and *Permanent Collection* for Jubilee Theatre, *Ellis Island: The Dream of America* for the Fort Worth Symphony Orchestra at Bass Performance Hall, and fourteen shows at Circle Theatre including *Over the Tavern*, *The Whipping Man*, *Hope and Gravity*, and *My Name is Asher Lev*. At TCU, his directing credits include *Oklahoma!*, *You Can't Take It With You*, *Little Women* and *No, No, Nanette*. Originally from Oklahoma City, Harry received his BFA in Theatre from TCU, and an MA and Ph.D. from the University of Kansas. He is a two-time winner of the Kennedy Center Medallion of Excellence, and was named Tarrant County Theatre Educator of the Year in 2009. He has served as the National Chair of the Kennedy Center American College Theatre Festival and served on the Board of Directors for Circle Theatre and the Live Theatre League of Tarrant County. Harry is also the Founding Managing Director for the award-winning Trinity Shakespeare Festival at TCU. In 2013, he was named the winner of the TCU Chancellor's Award for Distinguished Achievement as a Creative Teacher and Scholar. Before joining TCU, he previously served for 11 years as the Director of Theatre at Emporia State University in Kansas. He is an associate member of The Stage Directors and Choreographers Society.

* Member of Actors' Equity Association

JAY DIAS (*Lyric Stage Music Director/ Conductor*) for Lyric Stage: *South Pacific*, *Lady in the Dark*, *Annie Get Your Gun* in concert, *The Golden Apple* (music & libretto restoration; complete recording on PS Classics), *Fiddler on the Roof*, *Titanic* (also scene work), *Blue Roses*, *The Desert Song* in concert (1926 version; music & libretto restoration; direction & musical staging), *Nine* at Dallas City Performance Hall, *The Sound of Music*, *The Music Man*, *Too Many Girls*, *Pleasures and Palaces* (restoration), *1776*, *The Most Happy Fella* (complete version restoration), *Oklahoma!*, *Kismet* in concert (restoration), *Rags*, *Gypsy* (restoration), *Oliver!*, *My Fair Lady*, *Bye Bye Birdie* (restoration), *Show Boat* in concert (1927 version; music & libretto restoration), *Funny Girl* (restoration), *The King and I*, *West Side Story*, *Carousel*, *Sweeney Todd* in concert at Meyerson Symphony Center, and two concerts with the Irving Symphony Orchestra: programs of works by Rodgers & Hammerstein, and the music of Jule Styne and Harold Arlen – all featuring the original Broadway orchestrations.

JACK DEGELIA (*Production Stage Manager*) is thrilled to return to Lyric Stage after a 12-year absence. He was last seen on this stage as Samovar in *A Day In Hollywood/A Night In The Ukraine* for which he also reproduced the original choreography earning him a Leon Rabin Award nomination. His theatre credits as a performer include: NYC – *They're Playing Our Song* (Vernon u/s), *A Day In Hollywood...* (Samovar u/s), and *Children of a Lesser God* (James Leeds u/s). He spent more than 4½ years in *Fiddler On The Roof* as Motel, the tailor, working with original director/ choreographer Jerome Robbins. Other favorite roles include Zach in *A Chorus Line*, Cornelius in *Hello, Dolly!* with Pearl Bailey, Barnum in *Barnum*, Marvin in *Falsettos*, Hysterium in

A Funny Thing Happened..., and Edmond in *A Long Day's Journey Into Night* with Gale Sondergaard. As a director/choreographer his work has garnered awards across the country reproducing original choreography and staging of Broadway's masters, Bob Fosse, Gower Champion, Jerome Robbins, Michael Bennett and Tommy Tune. He served as a television producer for 12 years at NBC in Los Angeles where movies he produced received both Emmy and Golden Globe awards. He currently serves as the Dean of Instruction for the College of Humanities, Art, Media and Performance and the Facilitator of the Academy of Media Art & Technology for Carrollton-Farmers Branch R.L. Turner High School.

DON POWERS (*Rehearsal Pianist*) – Don is very pleased to be involved with Lyric Stage. A graduate of Stephen F. Austin State University, he holds a Bachelor's degree in theatre and a Master's degree in music. After moving back home from Hawaii where he played keyboards for the Don Ho show, he acted as the resident music director at Theatre Arlington from 1982 until 2014. He enjoys retired life mainly because it gives him more time for music and theatre!

BILL EICKENLOFF (*Sound Design*) is the resident Sound Designer for Lyric Stage, as well as an adjunct professor at TCU's Theatre Dept. in Fort Worth. He is also the resident sound designer for Theatre Arlington and works for Casa Manana, Wishing Star Productions, Prism Theatrics and the Trinity Shakespeare Festival. He is a proud graduate of Texas A&M University. See his complete bio at www.linkedin.com.

JULIE N. SIMMONS (*Lighting Design*) is always thrilled to be working with Lyric Stage! Julie has designed for Lyric's recent productions of *The Lady In The Dark* and *Annie Get Your Gun*. She is currently the Technical Director for the Murchison Performing Arts Center at UNT.

DRENDA LEWIS (*Costume Coordinator*) has done more than 20 Shows with Lyric, most recently *Lady in the Dark*. Other shows include *Most Happy Fella*, *Too Many girls*, *Oklahoma*, *Rags*, and *Fiorello*. Also worked with Circle Theatre, Jubilee Theatre, And Casa Mañana as well as many schools.

KRISTIN M. BURGESS* (*Props*) is dreaming of sitting on the beach drinking a Piña Colada! She is a Board Member at Runway Theatre in Grapevine and has worked in many other theatres in the area.

* Member of Actors' Equity Association



LYRIC STAGE SEASON 23
2015-2016

TICKETS
SUBSCRIBE
to get two
shows free!
lyricstage.org
972-252-2787

JAY DIAS, *Conductor*

VIOLINS

Stephen Beall,
Concertmaster
James Andrewes
Inge Kroll
Tonda Sykes
Leah Greenfield
Rachel Bundy
Randy Lyle
Katrina Kratzer

VIOLAS

Annika Donnen
Veronika Vassileva
Miguel Cantu IV
Miriam Oddie

CELLOS

Eric Smith
Shawna Hamilton
Angela Harvey
Vilma Peguero

DOUBLE BASSES

Mariechen Meyer
Tony Rosario

FLUTE/PICCOLO

Christian Gonzalez

CLARINET

Christy Springer

BASSOON

Janelle Ott

FRENCH HORNS

Christopher Fortenberry
Amy Stokes

TRUMPET

Miles Johnson

PERCUSSION

Steve Begnoche
Ashley Westgate

PIANO

Mary Medrick

KEYBOARD

Jesse Fry

HARP

Cynthia Shockley

Join the League

You are invited to join Lyric Stage League, a fun-filled group dedicated to supporting Lyric Stage. Join us for the many fund-raising and exciting events scheduled throughout the year.

For more information, please contact Fran Cassels, President, at 972-887-0592 or franc@verizon.net.



LYRIC STAGE LEAGUE

BENEFITING



**THE LESS ART
KIDS GET, THE
MORE IT SHOWS.**

ART

ASK FOR MORE.

Did You Know?

Young people who participate in the arts for at least three hours on three days each week through at least one full year are:

- **4 times** more likely to be recognized for academic achievement
- **3 times** more likely to be elected to class office within their schools
- **4 times** more likely to participate in a math and science fair
- **3 times** more likely to win an award for school attendance
- **4 times** more likely to win an award for writing an essay or poem



**AMERICANS
for the ARTS**

GET INVOLVED

www.americansforthearts.org/public_awareness



LYRIC STAGE DONORS

SEASON SPONSORS

The Belmont Foundation Joy and Ralph Ellis	The City of Irving through the Irving Arts Board	Glenda Deemer Lyric Stage League	The Stemmons Foundation TACA
---	---	-------------------------------------	---------------------------------

PRODUCER'S CIRCLE \$1000-\$5000

Jane & Charles Beach Patricia Buzard Tim Chase and Eric Powell Robin T. Conlon	Jacqueline & Dick Grote Betty Ann & Dan Killingsworth	Anne F. Lyster Charitable Foundation Angela D. Paulos Joyia Elinson & Jerry Setliff	Fidelity Charitable Grant through Shirley & Burnell Strehman Charitable Gift Fund
---	---	--	--

DIRECTOR'S CIRCLE \$500-\$999

Buchanan Family Trust Fran & James Cassels Sharry Hay Robbie & Milton Hickman Houston E. Holmes, Jr. Amy & Douglas Jackson	Carol & Dan Klein From the Texas Presbyterian Foundation Donor Advised Fund Anne P. Leary Janene & Warren Ludlow	Gaston Maurin through IBM Matching Grant Kyle & Gaston Kerr-Maurin Sandra & Perry Maxwell Martha-Hinojosa Nadler & Barry Nadler	Jean & David Neisius June Parker and Joe Oneal Allison & Heinz Simon Susanna Moross Tarjan Dana & Jay Taylor Jennifer Tucker Barbara & Charles Van Duyn
---	---	--	---

ACTOR'S CIRCLE \$100-\$499

Karen Albrecht Ruth & Bernie Allard Cacky & Mike Barns Steven Begnoche Sandi & Joe Black Beth & Paul Braziller Cheryl & Mark Bruce Lawrence Carlson Diann & Joe Contestabile Betty Jo Taylor Cox Marge & Dick Dellert Jody & Bob Dodson Ireta & Harrell Ellis Julie & Mike Esstman Eleanor Roylance-Ewing Patricia Fallon Sandy Ferney Paula Flatley Milton Gutierrez Emily & Jim Hartnett	Lois Sonnier Hart and Bill Hart Susan & Charles Heather Tena M. Hehn Martha Heimberg Christiane Hepter Charnelle Howell Irene Hosford Mark Jacobs Barbara & Larry Jones Marlene & A. J. Jones Linda & Steve Judge Jan & Byron Killen Kenton Kravig William A. Kumpf Anne Leary William Leazer Anthony Lumpkin Ray Martin	Barbara & Sam McKenney Diana & Al Montouri Kipton & Delynda Moravec Diana Muckleroy Charlie Nieman Sybil & Lyle Novinski Lynn & Mark Oristano Anne Pfaff Allen Plotkin Carolyn & Bill Propes William Raecke Rhonda Ray Rosalie Reeder Georgia Regelsky Susan & Wayne Ruhter Melanie & Larry Sanders Phyllis Schieber and Phyllis Schieber through Exxon Mobil Foundation Cultural Matching Gift Program	Bob Schultz, Jr. through Venture Solutions Employee Charitable Contribution Fund Danise & Curtis Sharp Louis & Carole Shlipak Philanthropic Fund of the Dallas Jewish Community Foundation Evelyn & Brad Simmons Dianne & G. C. Slaughter Elizabeth Stephens Fiona D. Stokes Regina Story John Dee Swopes Susan & Tom Totter Foundation Doug Unger Charles Villarreal Laura & Brian Wallace Claire & Kenneth Ward
---	--	--	--

FRIENDS UP TO \$99+

Anonymous Gift X 6 Randi & Lawrence Alter Alice Baltierra Jim Bass Lucas Belinkie Mary Bell Roberta Berger Harriet & John Blake Diana Briner Byron Cain Miguel Cantu Carol Clayton Daron Cockerell Lee Ann Collins Lynn & William Dagar Diane Daniels Annette Davis Louise & Larned Delano Cornelia & Theodore Dornseifer FRD Energy Services LLC Diane Ewing Margaret Filingeri	Debbie and Alan Fleck Diane Foote Paula Flatley Elyse & David Fleming Philip Friend Hallie Garner Elizabeth Garrett Howard Gottlieb Kyle Hall Judith Hanson Angela Harvey Tena Hehn Mary E. Hicks David Hines Sam Holman Diane & David Hott Katherine & Clint Howard Nina & Ben Howell Linda & Carroll Hughes Patty Jantho Pam Knott Kenton Kravig	Lois Leftwich Dianne & Larry Lester Joan Lyons Allen London Ellice Lovelady Raymond Martin Andrea McDaniel Sharmila & Justin McDonald Christopher McGee Shirley McGee Tootsie & Ed Morton Mardi Myers Joe Mullins Chris Newberry Charles E. Norwood Gene & Bill Olafsen Virginia Orr Robert Peters Leonard Puger Sonia Philipson Dorothy H. Pustejovsky Nelson Ringmacher	Neil Rogers Sue Routh Patsy & Walter Robinson Laura & Duane Sanner Monta Scaggs Sharon & Barry Schuller Sam Schultz Kathryn Sheeler Betty Sue Sheinberg Evelyn Simmons Mary A. Smith Francis R. Swietek June T. Taylor Michael Titus Norman Toothaker Doty Verett Michael Wald John Willgins Eric Willborn Jane Willingham Mary Lou & Jim Yarter
---	---	--	--

MEMORIALS AND TRIBUTES

David Gutierrez in Memory of Nik Hobson	Carole & Louise Shlipak In honor of 25 th Wedding Anniversary of Estelle & Fred Odell	Lyric Stage League in Memory of Flor Smith and Mary Louise Wadsworth
--	---	---

LYRIC STAGE FOUNDERS

Susan Bartlett &
Edward deLimburg
Robin & Clyde Beggs
Linda & William Brown
Dorothy Cate
Marisa C. Christie
Kyle Coffey
Betty & Wayne Cummings
Dr. & Mrs. Loc Gee Ding
(Orange County Chinese
Culture Club)
Ladorna & Robert
Eickenberg
In Memory of:
Robin Redmond Garst
Oneida & Robert Gibson
Lillie Hinde

Phyllis & Don Harper
Lois Sonnier & Bill Hart
Sandra & Jack Hickey
Kathy & Clinton Howard
Rosalie & Donald Jensen
Barbara & Larry Jones
Dr. Donna Kiesel
Sally & Olin Lancaster
Faye Leeper
Kathryn Lewis
Ruby & Jonathan Lloyd
Jacklyn & Frank Mueller
Elaine O'Rourke &
Jerry Adam
Marge & Morris Parrish
Peggy Patterson
Martin Perry

Jan & Gordon Purcey
Katherine Reamer
Glenn Sayles
Myrna & Bob Schlegel
Gerry & Walter Schroeder
Margie & Thomas Siems
Georgine & Ralph Smith
Dr. Kenneth &
Shelley Smithson
Nancy & Ross Spicer
Tricia & Eric Stammberger
Sheri & Bobby Staten
Billie & Gillis Thomas
Marsha & Bob Tokerud
Melody Tynor
Frances & Charles
Winikates, Jr.

LYRIC STAGE BOARD OF DIRECTORS

Dr. Steven Jones,
Producer and President

Sharry Hay,
Chairperson

Hunter L. Lewis
Treasurer

Fran Cassels,
Ex Officio

Bill Hart,
*Past Chairperson &
Advisor*

Dan Killingsworth

Brad LaMorgese

June Parker,
Marketing

Tom Trotter,
Non-Profit Governance

LYRIC STAGE STAFF

Steven Jones,
*Founding Producer
and President*

Jay Dias,
Music Director

Sally Soldo,
Company Manager

Shane Peterman,
Associate Producer



Funded in part by the city of Irving through the Irving Arts Board

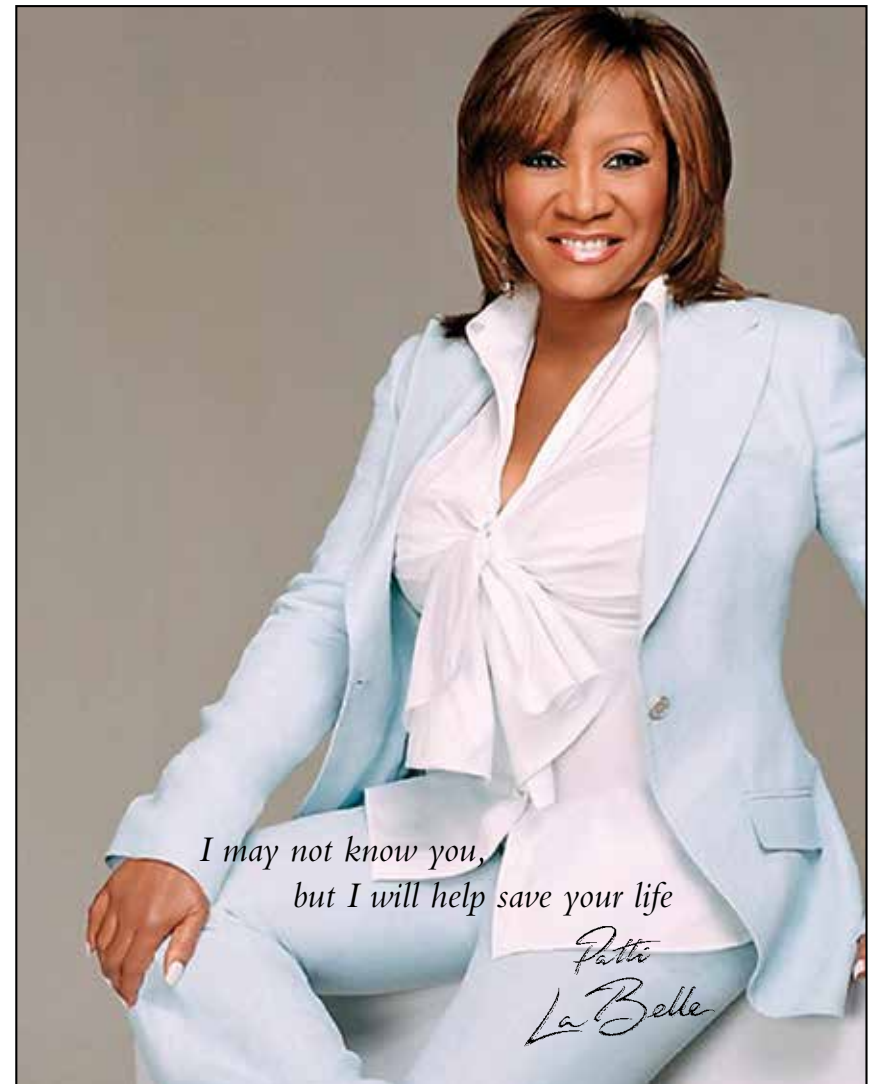


Stageview



Experience your program
book in a whole new way
No Apps. No Downloads.

brought to you by **onstage**



*I may not know you,
but I will help save your life*

*Patti
LaBelle*

WE ALL HAVE TO LOOK OUT FOR EACH OTHER.
WHEN YOU HELP THE AMERICAN RED CROSS, YOU HELP AMERICA.
THROUGH HER INVOLVEMENT WITH THE AMERICAN RED CROSS,
PATTI LABELLE HELPS TO SAVE LIVES EVERY DAY.

TO LEARN HOW PATTI LABELLE IS HELPING,
OR TO FIND OUT WHAT YOU CAN DO TO HELP, VISIT REDCROSS.ORG.

