

LYRIC STAGE and STAGEVIEW



STAGEVIEW: your paperless program book

Scan the code located to the left with your smart device for additional information on the show, or visit www.stageview.co/lyr

NO APPS. NO DOWNLOADS

Access your program book quickly and securely without a cumbersome download.

SOCIAL INTERACTION

Connect to your favorite venue and performers while you sit in the audience.

PURCHASE TICKETS

Purchase tickets for upcoming shows right from your seat.

LYRIC
STAGE

LARRY GATLIN'S

QUANAH

APRIL 28–MAY 7 2017
CARPENTER HALL
IRVING ARTS CENTER



Steven Jones,
Founding Producer

Presents

QUANAHA

Music, Lyrics and Book by **Larry Gatlin**

starring

Larry Gatlin*

And

David Phelps

featuring

Daron Cockerell **Brett Warner***
Sonny Franks* Tim Brawner Justin Duncan Lauren Scott

with

Mindy Bell, Nik Blocker, Angela Davis, Caitlin Galloway, Nicholas Godfrey,
J. Anthony Holmes, Jamall Houston, Branden Loera, Shelbie Mac, Jonathan McInnis,
Michael McMillan, Ian Mead Moore, Teresa Natera, Mindamora Rocha, Steve Sifford,
Robert Twaddell, Rhett Warner, Parker Weathersbee, Alison Wheaton

*Member, Actor's Equity Association

Producer
Shane Peterman

Lighting Design
Julie N. Simmons

Sound Design
William Eickenloff

Scenic Design
Randel Wright

Costume Consultant
Sarah Tonemah

Production Stage Manager
Bonnie Hanvey*

Music Director/Conductor/Arranger
Galen Butler

Directed and Choreographed by
John de los Santos

David Turrentine Productions in association with Turrengat, LLC
P O Box 2542, Parker, CO 80134

Opening Night – April 28, 2017

CAST OF CHARACTERS

(In order of appearance)

Old Ranger	Larry Gatlin*
Peta Nocana	David Phelps
Silas Parker	Justin Duncan
Lucinda Parker	Brett Warner*
Cynthia Ann Parker, as a girl	Lauren Scott
James Parker	Tim Brawner
Nauda (Cynthia Ann Parker)	Daron Cockerell
Quanah, as a boy	Parker Weathersbee
Quanah, as a youth	Nicholas Godfrey
Captain Sullivan Ross	Ian Mead Moore
Quanah Parker	David Phelps
Colonel Ranald MacKenzie	Sonny Franks*
President Andrew Johnson	Steve Sifford
Ensemble	Mindy Bell, Nik Blocker, Angela Davis, Caitlin Galloway, J. Anthony Holmes, Jamall Houston, Branden Loera, Shelbie Mac, Jonathan McInnis, Michael McMillan, Ian Mead Moore, Teresa Natera, Mindamora Rocha, Steve Sifford, Robert Twaddell, Rhett Warner, Alison Wheaton
Understudy	Shane Peterman*

PRODUCTION STAFF

Director/Choreographer	John de los Santos
Musical Director	Galen Butler
Sound Design	William Eichenloff
Lighting Design	Julie N. Simmons
Scenic Design	Randel Wright
Costume Consultant	Sarah Tonemah
Production Stage Manager	Bonnie Hanvey*
Assistant Stage Manager	Katie Marchant*
Interns	Courtney White, Camilla Cox, Preston Page

* - Member Actors' Equity Association

ORCHESTRA

GALEN BUTLER, *Conductor*

VIOLINS

Thane Isaac
Angeline Park

CELLOS

Brian Seo
Hsiang-Chu Chuang

KEYBOARDS

Galen Butler
Scott Eckert
Kristen McKinley

VIOLIN 2

Jana Lee
Thomas Keeley

BASS

Philip Friend

PERCUSSION

Shannon Ford

Special thanks to Scott Eckert for the string arrangements, and to Drenda Lewis, Tammy Spencer and Casa Mañana for costume assistance.

MUSICAL NUMBERS

ACT I

Scene 1:	
“What Color is God Anyway?”	Quanah
“Magnificent Bastard”	Old Ranger
“Whose Land is This Anyway”	Peta, Old Ranger
Scene 2:	
“Texas, What a Glorious Land”	Settlers
Scene 3:	
“Here on This Bloody Ground”	Lucinda
“Sister I Vow to You I’ll Find Her”	James
Scene 4:	
“The Parker Men Gave Chase”	Old Ranger
“I Hear the Whirlwind”	Comanche women
“I’ll Kill Anybody”	Peta
“Skinny Little Thing”	Comanche women
“Wishes”	Cynthia Ann
“Time Gave Her to Me”	Peta
Scene 5:	
“When Calls the Heart”	Nauda, Peta
“In His Arms”	Nauda
“When I Hold Her in My Arms”	Peta
Scene 6:	
“Time Does What it Does” / “Repeat After Me” / “Wandering Forever”	James, Nauda, Boy Quanah, Old Ranger
Scene 7:	
“We’re Texas Rangers”	Rangers
“The Hand I was Dealt”	Old Ranger

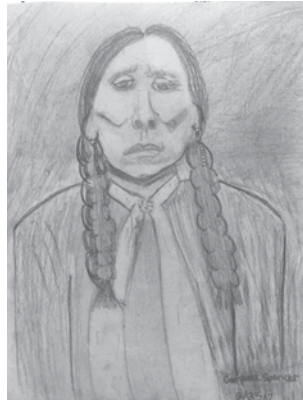
ACT II

Scene 1:	
“Wishes” (Reprise)	Cynthia Ann
“How Can I Bury a Piece of My Heart”	Cynthia Ann
“Whirlwind” (Reprise)	Peta, Cynthia Ann
Scene 2:	
“If I Find You, I’ll Kill You Today”	Quanah, Mackenzie
Scene 3:	
“We’ve Come for a Council”	Entire Cast
“Hear Noble Warriors”	Mackenzie
Scene 4:	
“Buffalo Ponies”	Old Ranger, Quanah
“I’d Sacrifice Myself”	Quanah
“Come and Hold Me in Your Arms”	Quanah
“I Have Heard Your Spirit Calling”	Quanah
“We Are Children of the Spirit”	Comanches

Hi Y'all

First, I want to thank my friend Steven Jones for his faith in me, and I want to thank the cast, crew, musicians, and all the wonderful folks here at Lyric Stage.

Almost 30 years ago, my old and dear friend, Red Steagall told me the story of Quanah Parker and the Parker family. I said, "Red, that's an American Les Miserables... let's write a musical." Red said, "Larry Wayne, I'm just a songwriter, cowboy poet and rodeo singer. You're the musical theater guy, you write it and I'll help you however I can." So, I did and he did. Much obliged, Red. I couldn't have done it without you.



Also, there's Dr. James Hagan, Professor Emeritus of History at the University of Oklahoma. I had a wonderful visit with Dr. Hagan, an expert on Quanah. I said, "Dr. Hagan, real life doesn't really unfold in two acts, with an intermission, a 10:30 ballad and a finale. Do I have your permission to..uh.." He interrupted and asked, "make up some stuff?" I shook my head "yes" and then he continued. "Mr. Gatlin, I'm a historian. I can only write about the things we know have happened. You are an entertainer. Write your musical about this incredible man—Quanah Parker and The Parker family—this story about determination and survival, and "make up some stuff," when you don't know exactly what happened. Call it,

QUANAH

A Musical based on Quanah Parker and The Parker Family Saga.

So that is what I've done. Thanks "Doc."

Also, I want to thank the great poet, playwright and philosopher, Samuel Taylor Coleridge, who suggested that, "if a writer could infuse a "human interest and a semblance of truth into a fantastic tale, the reader would suspend judgement concerning the implausibility of the narrative." Mr. Coleridge called it, "The willful suspension of disbelief." I call it "makin' some stuff up."

I guess the question is, are you nice folks "willing to suspend your disbelief" and ride the plains with this wonderful cast, and me, and Quanah Parker, the last Comanche Chief?

I hope so, 'cause we ain't givin' your money back.

KEEP THE FAITH and YAH HEY,

Larry

P. S. Special thanks to the Bear and Mr. B.

A while back I told my granddaughters, Parker (do you believe it) and Campbell, the story of Cynthia Ann Parker and her son, Quanah. Well, I'm a pretty good storyteller—they love their Papa's stories—and they are great listeners. They loved the story.

Parker, my 16-year-old, going on 30, is also a storyteller. She just loves to "make stuff up," kind of like her Papa.

Campbell, my 11-year-old, is the "drawer." A few months ago she drew a baseball glove that looks just like my Rawlings Mickey Mantle from the 60's.

Fast forward to February 25th, 2017. I had an idea. (I'm sometimes short on resources but never short on ideas). I called Campbell and asked if she would like to use the Palomino Blackwing pencils I have given her to draw a picture of Comanche Chief Quanah Parker.

She did...

I was so moved by her rendering (and because it's a nice human interest story) that I asked Steven Jones if we could use it in the program and he said yes...HOORAY!!

Keep the Faith, "Papa" Gatlin





LARRY GATLIN* (Old Ranger) The close family harmonies of Larry Gatlin & the Gatlin Brothers have given the trio a signature sound that led to over 30 top 40 hits, like "All The Gold In California" and "Houston (Means I'm One Day Closer To You)." Larry, and brothers Rudy and Steve, won a GRAMMY® for their 1976 breakthrough hit, "Broken Lady," and reached #1 with several other songs soon thereafter. Along with five career nominations for the ACM Vocal Group, the Gatlin Brothers picked up three 1979 trophies – Single of the Year ("All The Gold In California"), Album of the Year (Straight Ahead) and Male Vocalist of the Year for Larry Gatlin. He has written songs that were later recorded by Elvis Presley, Glen Campbell, Barbra Streisand, Johnny Cash, Kris Kristofferson, Ray Price, Tom Jones, Roy Orbison, Barry Gibb, Johnny Mathis, Dottie West and more.



DAVID PHELPS (Quanah Parker) Born in Dallas, raised in Tomball, Texas and now living in Tennessee, David Phelps graduated Baylor University with a music degree in vocal performance. David entered the Billboard charts at No. 1 with his *Classic* DVD in 2012 and his *Freedom* DVD in 2015. Multiple Dove and GRAMMY® Award winner Phelps has performed at the world's leading venues from the Sidney Opera House to the White House. For more information on David Phelps please visit his website at www.davidphelps.com.

* - Member Actors' Equity Association



MINDY BELL (Ensemble) is excited to help bring this new work to life! Recent credits include *Camelot* at Lyric Stage, *The Light in the Piazza* at Brick Road Theatre, *Guys and Dolls* at Rockwall Summer Musicals, and *Ragtime* and *Sweeney Todd* with Uptown Players. www.mindybell.com



NIK BLOCKER (Ensemble) is very happy to be making his Lyric Stage debut! He's recently been seen as Ms. Bumbrake/Teacher in *Peter and the Starcatcher* at Onstage In Bedford and Ensemble in *Guys and Dolls* at Theatre Arlington.



TIM BRAWNER (James Parker) is proud to be in his second production with Lyric Stage. He was previously in Lyric Stage's 2015 production of *Annie Get Your Gun*. He would like to thank his friends and family for their support.



DARON COCKERELL (Nauda) Previous Lyric shows: *Mame* (Agnes Gooch), *Anything Goes* (Reno), *Annie Get Your Gun* (Annie Oakley), *Into the Woods*, *Too Many Girls* and others. Also worked at Casa Mañana, WaterTower, Theatre Three, Plaza Theatre, Mainstage and others. TCU graduate.



ANGELA DAVIS (Ensemble) Lyric Stage: *Into the Woods* (Jack's Mother). Dallas credits include: Undermain Theatre (*10 Out of 12* and *Ghost Sonata*); Echo Theatre (*Her Song*); Pocket Sandwich Theatre (*Death the Musical II*); Contemporary Theatre of Dallas (*Little Women*); Proper Hijinx (*Two Rooms*).



JUSTIN DUNCAN (Silas Parker/ Ensemble) Previous credits: *The New Moon*, Lyric Stage; *Parade*, WaterTower; *Cotton Patch Gospel*, Theater Too; *Yellow*, Uptown Players; *Pericles*, Shakespeare Dallas, and National Tours of *Stuart Little/Flat Stanley*, Dallas Children's Theater. Up next: *Pure Country!*



SONNY FRANKS* (MacKenzie) *Ring of Fire*, *Camelot*, *One Man Two Guvnors*, *Edward Tulane*, *The New Moon*, *The Kountry Girls*, *South Pacific*, *Lady in*

the Dark, *Bonnie and Clyde*, *Grapes of Wrath*, *Boy from Oz*, *Human Comedy*, *Christmas Carol*, *Hank Williams*, *Grapes of Wrath*, *Gypsy*, *My Fair Lady*.



CAITLIN GALLOWAY (Ensemble): Caitlin is a DFW native who recently obtained her BFA in Acting from SMU. She has appeared at venues including CTD, Casa Manana, Bass Hall, Theatre Arlington, and Six Flags. She is so very excited to return to Lyric Stage!



NICHOLAS GODFREY (Quanah as a youth) is currently a junior at Booker T Washington HSPVA. Nick has been in many productions at school as well as around the area. Nick was in *Carousel* here at Lyric Stage as a little kid and is glad to be back.



J. ANTHONY HOLMES (Ensemble) Anthony is an actor, musician and writer from Dallas. He studied stage combat with RC Annie in Exeter and worked as a fight captain under Lloyd Caldwell. He is appearing in his third show at Lyric.



JAMALL HOUSTON (Ensemble) Lyric debut! Favorite credits: *A Streetcar Named Desire* (Stanley), *Songs for a New World* (Man 1), *The Addams Family* (Mal Beineke), *Elsie Janis* and *the Boys* (Ensemble), *State Fair* (Charlie). Thank you Lyric, my family, and friends. @justjamall



SHELBIE MAC (Ensemble) prays you have a BLESSED year. A current New Orleans resident and scenic painter, the past three years she has enjoyed working at one of the best community theaters in the country, Rivertown Theaters. Please visit www.shelbiemac.com.



JONATHAN MCINNIS (Ensemble) is excited to be returning to Lyric Stage! Recent credits include *Mame*, *Of Thee I Sing* and *The New Moon* (Lyric Stage), *Fiddler on the Roof* (Garland Summer Musicals), *Billy Elliot*, *Bye Bye Birdie* (The Firehouse Theatre). www.jonmci.com

* - Member Actors' Equity Association



MICHAEL MCMILLAN (Ensemble) is excited to return to Lyric Stage, where he was previously seen in *Mame*, *Camelot*, *South Pacific*, and *Annie Get Your Gun*. Other credits include *The Winter's Tale*, *Richard III*, *Fellowship!*, *Next to Normal*, and *Enchanted April*.



IAN MEAD MOORE (Captain Sullivan Ross/Ensemble) Ian is suffused with appreciation to be returning to Lyric Stage for this historic odyssey. Lyric Stage: *The Golden Apple* (Local Boy/others). Favorite past roles include *Memphis* (Buck Wiley) and *Soho Cinders* (William George). Voice talent for Funimation, professional guitarist.



TERESA NATERA (Ensemble) returns to Lyric Stage, previously seen in *Nine* as Giulietta. Credits include Anita (*West Side Story*), Velma Kelly (*Chicago*), Cunegonde (*Candide*), Millie (*Thoroughly Modern Millie*), Florence (*Chess*). Love to Mom, Dad, Josh, Emma, Jude, Bella, & James.



MINDAMORA ROCHA (Ensemble) has a B.A. in musical theatre from SOSU. Her favorite shows include DCT's *Tomas and the Library Lady*, MCT's *Jungle Book* as Baloo, Artes de la Rosa's *Vagina Monologues*, *Chicago* as Velma, *Xanadu* as Callopie, and *Legally Blonde* as Serena.



LAUREN SCOTT (Young Cynthia Ann) is thrilled to make her Lyric Stage debut! Prior roles include Jane Banks in *Mary Poppins* (The Firehouse Theater), Lucy in *The Lion, the Witch & the Wardrobe* (Theater Arlington) and Flounder in *Disney's The Little Mermaid, Jr.* (Theater Arlington). 1 Peter 4:10.



STEVE SIFFORD (President Andrew Johnson/Ensemble) Steve enjoyed several years as part of the opening act for Roy Clark in Branson, Missouri. For almost twenty years, he was the host and a featured vocalist at the Carolina Opry in Myrtle Beach, SC.



ROBERT TWADDELL (Ensemble) Twaddell's last performance was with Stolen Shakespeare Guild, playing the part of Claudio in *Much Ado About Nothing*. He would like to thank his family, blood and otherwise for their continued love and support.



BRETT WARNER* (Lucinda Parker) Lyric Stage: *The Human Comedy* (Mary Arena), *The Desert Song*. Additional regional appearances: Uptown Players (*The Nance*, *Soho Cinders*, *The Boy From Oz*), Casa Mañana, Dallas Children's Theater (*Seussical!*, *A Charlie Brown Christmas*), Theatre Three (*Fix Me, Jesus*), Circle Theatre (*Fellowship! The Musical*), Stage West (*The Rivals*).



RHETT WARNER (Ensemble) a rising TCU junior BFA Musical Theatre major, is making his Lyric Stage debut. Credits include: ensemble roles in *Aida* (Uptown Players), *Catch Me If You Can* (Uptown Players), *Best Little Whorehouse In Texas* (Theatre TCU), *Hollywood/Ukraine* (TCU), and *Guys and Dolls* (TCU).



PARKER WEATHERSBEE (Quannah as a boy) is so excited to be back at Lyric! He was last seen as Jerome in *South Pacific*. Previous credits include *The King and I* (Dallas Summer Musicals and Denton Community Theatre), and *Miss Saigon* (Casa Mañana). Thank you Mr. Jones for this opportunity!



ALISON WHEATON (Ensemble) Alison graduated from SMU with a Bachelor's of Music in Music Education. Her recent opera credits include *Susannah* (ensemble), and *La Finta Giardiniera* (ensemble). Alison has performed in many classical recitals and church settings. She teaches elementary music in Garland ISD.

JOHN DE LOS SANTOS (*Director/Choreographer*) has staged a range of productions that include opera, musicals, plays, ballet, concerts, variety shows, and workshop readings. His productions include the world premiere of *The Astronaut Love Show* for NYC's Kraine Theatre, *The Rose & The Knife* and *Otello* for LoftOpera, *La Cage Aux Folles* for Skylight Music Theatre, *Carousel* and *South Pacific* for Ashlawn Opera, *Maria de Buenos Aires* for Lexington Philharmonic, and *Green Sneakers* for the Southside Theatre at San Francisco's Fort Mason Center. His choreography has also been seen at the Washington National, Florida Grand, Philadelphia, Des Moines Metro and Austin Lyric Opera Companies. The New York Times called his production of *Le Comte Ory* for LoftOpera "a perfect union of New York's most raucous and delightful opera company with one of the most raucous and delightful works in the repertory." Also a librettist, John's first collaboration with composer Clint Borzoni, *When Adonis Calls*, was selected for inclusion in Fort Worth Opera's Frontiers showcase, and then performed at Opera America's New Works Forum in NYC. John's new work with Borzoni, *The Copper Queen*, won the top prize Arizona Opera's commission program, Arizona SPARK. He was then commissioned by Washington National Opera's American Opera Initiative to create a new original work with composer Christopher Weiss. The resulting piece, *Service Provider*, premiered at The Kennedy Center in 2015. John has directed *Carmen*, *The Mikado* and *The Pearl Fishers* for Fort Worth Opera, and choreographed the world premiere of Jake Heggie and Terrence McNally's *Great Scott* for Dallas Opera. He also choreographed *Spring Awakening*, *Smokey Joe's Café*, and *Dogfight* for WaterTower Theatre. For Uptown Players, John choreographed the American premiere of the Pet Shop Boys musical *Closer to Heaven*, the regional premiere of Altar Boyz (for which John was awarded the DFW Critics Forum Award for Best Choreography), and directed/choreographed the regional premiere of *Hello Again* and the American premiere of *Soho Cinders*. John's debut with Lyric Stage was dancing the Carnival Boy in *Carousel*, and choreographing *The Golden Apple*. John is originally from San Antonio, Texas, where he performed as a principal member of the Alamo City Dance Company. <http://johndelosantos.com>

GALEN BUTLER (*Music Director/Conductor*) is so happy to be a part of this production of *QUANAH*, and to be working with Lyric Stage again. Galen spends most of his time these days traveling the world with The Bellamy Brothers and The Gatlin Brothers, but musical theater has been a big part of his life for a number of years. As a musical director, he has led productions of *Memphis* (Northshore, Palo Alto), *Stand by Your Man*, *the Tammy Wynette Story*

(The Ryman, Goodspeed, Flat Rock Playhouse), *For The Glory* (Gettysburg, Flat Rock Playhouse), *The Rock Tenor* (Philadelphia), *Cirque Shanghai* (Navy Pier, Chicago), two National Tours of *The Civil War*. He has also served as resident Musical Director for Herschend Family Entertainment - Showboat Branson Belle for three years as well as the Alley Theater in Houston, TX.

JULIE N. SIMMONS (*Lighting Design*) is always thrilled to be working with Lyric Stage! Julie has designed for Lyric's recent productions of *Anything Goes* and many shows prior. She is currently the Technical Director for the Murchison Performing Arts Center at UNT.

WILLIAM EICKENLOFF (*Sound Design*) is the resident Sound Designer for Lyric Stage, as well as an adjunct professor at TCU's Theatre Dept. in Fort Worth. He is also the resident sound designer for Theatre Arlington and works for Casa Manana, Wishing Star Productions, Prism Theatrics and the Trinity Shakespeare Festival. He is a proud graduate of Texas A&M University. See his complete bio at www.linkedin.com.

RANDEL WRIGHT (*Scenic Designer*) native Texan, has designed scenery for *Singin' In The Rain* (national), *Unsinkable Molly Brown* (national / Debbie Reynolds), *Pal Joey* (Joel Grey) (Dixie Carter), *The Wiz* (Stephanie Mills), *I Do, I Do* (Sandy Duncan), *Batteries Not Included* (Jamie Hammerstein co-author & dir.), *Coca Cola Centennial*, *Dr. Pepper Centennial* and *Yale University Tercentennial*.

BONNIE HANVEY* (*Production Stage Manager*) is thrilled to return to Lyric Stage for the 2016-2017 season! She received her Theatre & Arts Administration degree from Texas Christian University and then began her professional career working as a DFW-based freelance stage manager. Other local credits include: *Present Laughter*, *Crazy for You*, and *I Love You You're Perfect Now Change* (Theatre Three, Dallas); *Division Avenue* and *Wait Until Dark* (Contemporary Theatre of Dallas); *Rudolph the Red-Nosed Reindeer* (Wishing Star Productions, tour); *Show Boat* (The Dallas Opera); and 5 seasons with the Trinity Shakespeare Festival in Fort Worth. In 2015 she also completed a 7 month contract with Royal Caribbean Cruise Lines as Stage and Lighting Staff based in the Northern Mediterranean Sea. *Soli Deo Gloria*.

* - Member Actors' Equity Association

SEASON SPONSORS

The Belmont Foundation Joy and Ralph Ellis	The City of Irving through the Irving Arts Board	Lyric Stage League* Angela D. Paulos*	The Stemmons Foundation TACA
-----------------------------------------------	-----------------------------------------------------	------------------------------------------	---------------------------------

PRODUCER'S CIRCLE \$1000-\$5000

Patricia & Gil Andres* Jane & Charles Beach Kitty & John Boyle Lucas Belinkie & John Conte* Patricia & Robert S. Buzard	Fran & James Cassels* Tim Chase and Eric Powell* Robyn & Don Conlon Eleanor Roylance-Ewing Sharry Hay* Caroline Rose Hunt Kyle F. Kerr*	Betty Ann & Dan Killingsworth Anne F. Lyster Charitable Foundation Sandra & Perry Maxwell* Lynn & Mark Oristano Joe Oneal & June Parker*	Anne & Wayne Pfaff* Joyia Elinson & Jerry Setliff* Fidelity Charitable Grant through Shirley & Burnell Stehman Charitable Gift Fund Kay & Harry Weaver
----------------------------------------------------------------------------------------------------------------------------------------	-----------------------------------------------------------------------------------------------------------------------------------------------------------	------------------------------------------------------------------------------------------------------------------------------------------------------------	--------------------------------------------------------------------------------------------------------------------------------------------------------------------------

DIRECTOR'S CIRCLE \$500-\$999

Ginger & Roy Battle Buchanan Family Trust Billie Buchanan Jean & Bill Buchanan Hank Cofield* Diann & Joe Contestabile* Julie & Mike Esstman* Paul Hale* Robbie & Milton Hickman Carol Hindes* Houston E. Holmes, Jr.*	Irving/Las Colinas Chamber of Commerce Amy & Douglas Jackson Barbara & Larry Jones* Carol & Dan Klein From the Texas Presbyterian Foundation Donor Advised Fund Anne P. Leary Janene & Warren Ludlow*	Gaston Maurin through IBM Matching Grant Kyle & Gaston Kerr-Maurin Patrice & Chris Miller* Martha-Hinojosa Nadler & Barry Nadler Jean & David Neisius Sybil & Lyle Novinski Lynn & Mark Oristano Dr. Christopher A. Salerno	Cliff Sharpless* Mary Lou Shipley* Mr. & Mrs. Heinz K. Simon* Dianne & Gregg Slight* Susanna Moross Tarjan Dana & Jay Taylor Jennifer Tucker Barbara & Charles Van Duyne Marlee & Zane Wilson*
-----------------------------------------------------------------------------------------------------------------------------------------------------------------------------------------------------------------------------------------------------	----------------------------------------------------------------------------------------------------------------------------------------------------------------------------------------------------------------------------------	-----------------------------------------------------------------------------------------------------------------------------------------------------------------------------------------------------------------------------------------------------------	---------------------------------------------------------------------------------------------------------------------------------------------------------------------------------------------------------------------------

ACTOR'S CIRCLE \$100-\$499

Anonymous Gift X 4 Karen Albrecht Ruth & Bernie Allard* Lawrence & Randi Alter* Rajiv Anand Cacky & Mike Barns James E. Bass Angela & Davin Bernstein* Mike Bernstein & Babette Cormier* Vern Berry* Sandi & Joe Black Carrie & Brent Blake* Beth & Paul Braziller Ginny Breihan & Darden McFarlin* Cheryl & Mark Bruce Byron W. Cain, Jr.* Betty Jo Taylor Cox* Marge & Dick Dellert* Benita & David Dick Jody & Bob Dodson Patricia Fallon Missy & Philip Friend* Richard Gosselin* Jo Grantland Stacy Green Jacqueline & Dick Grote* Milton & Kathy Guttierrez* Elaine & James Harrison* Ginny & Tony Hall*	Emily & Jim Hartnett Lois Sonnier Hart & Bill Hart* Susan & Charles Heather Tena M. Hehn Martha Heimberg* Christiane Hepfer Mary Hicks* Irene Hosford* Charlene Howell Carroll & Linda Hughes* Lori Humphreys* Mark E. Jacobs* Cheryl & Chip James* Marlene & A. J. Jones Paula & Dick Jones Linda & Steve Judge* Dorothy Kearney Judge Kerr* Kathleen & Dennis Keys* Jan & Byron Killen Kenton Kravig William A. Kump* Anne Leary William Leazer* Anthony Lumpkin Ray Martin Barbara & Sam McKenney* Kathy & Jim McMahon Patrice & Chris Miller* Diana & Al Montouri	Kipton & Delynda Morvec Jennifer Morton* Kathleen Morrill Diana Muckleroy Linda Nelson Charlie Nieman Patricia & Dan O'Reilly* Shane Peterman Elizabeth & Robert Ploger Allen Plotkin Carolyn & Bill Propes* William Raecke* Rhonda Ray* Rosalie Reeder* Georgia Regelsky Mark Richardson* Susan & Wayne Ruhter* Melanie & Larry Sanders* Phyllis Schieber and Phyllis Schieber through Exxon Mobil Foundation Cultural Matching Gift Program Bob Schultz, Jr. through Venture Solutions Employee Charitable Contribution Fund Barbara & Brock Scott R. A. Seeliger & L. H. Harrison*	Danise & Curtis Sharp Nancy Shelton* Louis & Carole Shlipak Philanthropic Fund of the Dallas Jewish Community Foundation Carol Silverthorne* Herbert J. Smith Carolyn Spriggs* Lola & Jeff Stark Mary Steinberg Elizabeth Stephens Amy Stevenson* Fiona D. Stokes Regina Story John Dee Swope Elizabeth & Rod Symons* Susan & Tom Totter* Jenny Tucker Linda & Elton Turner Doug Unger The University of Dallas Evelyn & Paul Utay Charles Villarreal Marion Wadsworth* Laura & Brian Wallace Claire & Kenneth Ward Arlene & Paul Weisberg Frances & Chuck Winikates*
----------------------------------------------------------------------------------------------------------------------------------------------------------------------------------------------------------------------------------------------------------------------------------------------------------------------------------------------------------------------------------------------------------------------------------------------------------------------------------------------------------------------------------------------------------------------------------------------------------------------------------------------------------------------------------------------------------	-----------------------------------------------------------------------------------------------------------------------------------------------------------------------------------------------------------------------------------------------------------------------------------------------------------------------------------------------------------------------------------------------------------------------------------------------------------------------------------------------------------------------------------------------------------------------------------------------------------------------------------------------------------------	------------------------------------------------------------------------------------------------------------------------------------------------------------------------------------------------------------------------------------------------------------------------------------------------------------------------------------------------------------------------------------------------------------------------------------------------------------------------------------------------------------------------------------------------------------------------------------------------------------------------------------------------------------------------------	--------------------------------------------------------------------------------------------------------------------------------------------------------------------------------------------------------------------------------------------------------------------------------------------------------------------------------------------------------------------------------------------------------------------------------------------------------------------------------------------------------------------------------------------------------------------------------------------------------------------------------------------------------------

FRIENDS UP TO \$99+

Anonymous Gift X 4 Chuck Alexander* Alice Baltierra* Katherine Barry* Meg Barry* Mary Bell Bonnie & Carl Bergauer Roberta Berger Harriet & John Blake Diana Briner Deborah Brown* Greg Brown* Miguel Cantu Lisa Chambers* Carol Clayton Daron Cockerell Lee Ann Collins Torrey Curtis* Lynn Cox & Jerry Gross* Lynn & William Dagar Diane Daniels Annette Davis* Louise Delano* Cynthia & Ron DeVies* Marie Dobson Susan & John Duke Cornelia & Theodore Dornseifer Jacqueline Elledge* FRD Energy Services LLC Diane Ewing* Margaret Filingeri* Debbie and Alan Fleck* Diane Foote*	Paula Flatley Elyse & David Fleming Dr. Mary Forrest* Carol Galloway* Donna & Woodrow Gardner* Hallie Garner* Liz Garrett* Maura Gast* Denise & Howard Gottlieb* Kyle Hall Judith Hanson Paula M. Harrison* Angela Harvey Susan & Chuck Heather* Tena Hehn Mrs. Mary E. Hicks* Donna Hill* Rachael Hilt* David Hines Sam Holman Dr. Steven Holtzman Diane & David Hott Katherine & Clint Howard* Nina & Ben Howell Lori Hunphreys* #Cheryl James Patty Jantho Sally K. Johnson* Sheryl Kelley* Joseph Kilgore* Pam Knott Carolyn & Joseph Kobos* Kenton Kravig	JoAnn & Jack Leavitt Linda M. Lee & Jay Isham* Lois Leftwich Dianne & Larry Lester Joan Lyons* Allen London Ellice Lovelady Vianey Mansoori* Kate & Steve Marshall* Raymond Martin Andrea McDaniel Sharmila & Justin McDonald Christopher McGee* Jane McGinnis* Carol Meer* Patrice & Chris Miller #Minuteman Press Susan Jackson Moore & Will Moore* Wade Moran, CPA* Tootsie & Ed Morton Mardi Myers Joe Mullins Chris Newberry* Charles E. Norwood Gene & Bill Olafsen* Virginia Orr* Gail Payne* Robert Peters Leonard Pfluger* Mrs. Sonia Philipson* Don Powers & Rob Berg* Priscilla & John Promise*	Dorothy H. Pustejovsky* Dr. & Mrs. Richard Ridgway* Connie Riley* Nelson Ringmacher Deborah Rothermel* Sue Routh* Patsy & Walter Robinson Laura & Duane Sanner Monta Scaggs Ronnie Scaggs* Sharon & Barry Schuller Sam & Bob Schultz* Deborah Deering Schwartz* Kathryn Sheeler Betty Sue Sheinberg* Mary A. Smith Nancy Shelton* Evelyn & Brad Simmons Mary A. Smith Matt Stepan* Mr. & Mrs. Don Stevenson* Charles Robert Sullivan* Francis R. Swietek* June T. Taylor Michael Titus Norman Toothaker Dotty Verett Michael Wald John Wiggins Eric Willborn James Williams* Jane Willingham* Michael York*
-----------------------------------------------------------------------------------------------------------------------------------------------------------------------------------------------------------------------------------------------------------------------------------------------------------------------------------------------------------------------------------------------------------------------------------------------------------------------------------------------------------------------------------------------------------------------------------------------------------------------------------------------------------------------------------------	-------------------------------------------------------------------------------------------------------------------------------------------------------------------------------------------------------------------------------------------------------------------------------------------------------------------------------------------------------------------------------------------------------------------------------------------------------------------------------------------------------------------------------------------------------------------------------------------------------------------------------------------------------------------	---------------------------------------------------------------------------------------------------------------------------------------------------------------------------------------------------------------------------------------------------------------------------------------------------------------------------------------------------------------------------------------------------------------------------------------------------------------------------------------------------------------------------------------------------------------------------------------------------------------------------------------------------------------------------------------------------------------	----------------------------------------------------------------------------------------------------------------------------------------------------------------------------------------------------------------------------------------------------------------------------------------------------------------------------------------------------------------------------------------------------------------------------------------------------------------------------------------------------------------------------------------------------------------------------------------------------------------------------------------------------------------------------------------------------------------

*North Texas Giving Day Donation, 9/22/2016

Memorials and Tributes

Kyle F. Kerr
In Memory of Gaston C. Maurin
Lyric Stage League in memory of
Brock Scott
Ed Jaben
Bill Watts
Harry Weaver
Joe & Diann Contestabile
In Memory of Dan O'Reilly
and Mark Benigno
Sharry Hay in memory of
Karen Brandes
Murray & Bobbie Berger
In honor of
Jo & Jerry Zeffren

LYRIC STAGE FOUNDERS

Susan Bartlett & Edward
deLimburg
Robin & Clyde Beggs
Linda & William Brown
Dorothy Cate
Marisa C. Christie
Kyle Coffey
Betty & Wayne Cummings
Dr. & Mrs. Loc Gee Ding
(Orange County Chinese
Culture Club)
Ladorna & Robert Eickenberg
In Memory of: Robin
Redmond Garst
Oneida & Robert Gibson
Lillie Hinde
Phyllis & Don Harper

Lois Sonnier & Bill Hart
Sandra & Jack Hickey
Kathy & Clinton Howard
Rosalie & Donald Jensen
Barbara & Larry Jones
Dr. Donna Kiesel
Sally & Olin Lancaster
Faye Leeper
Kathryn Lewis
Ruby & Jonathan Lloyd
Jacklyn & Frank Mueller
Elaine O'Rourke & Jerry
Adam
Marge & Morris Parrish
Peggy Patterson
Martin Perry
Jan & Gordon Purcey

Katherine Reamer
Glenn Sayles
Myrna & Bob Schlegel
Gerry & Walter Schroeder
Margie & Thomas Siems
Georgine & Ralph Smith
Dr. Kenneth & Shelley
Smithson
Nancy & Ross Spicer
Tricia & Eric Stammberger
Sheri & Bobby Staten
Billie & Gillis Thomas
Marsha & Bob Tokerud
Melody Tyner
Frances & Charles
Winikates, Jr.

LYRIC STAGE BOARD OF DIRECTORS

Dr. Steven Jones, *Producer
and President*
Sharry Hay, *Chairperson*
Karen Boozer, *Secretary*
Hunter L. Lewis, *Treasurer*

Fran Cassels, *Ex Officio*
Bill Hart, *Past Chairperson &
Advisor*
Dan Killingsworth

Brad LaMorgese
June Parker, *Marketing*
Tom Trotter, *Non-Profit
Governance*

LYRIC STAGE STAFF

Steven Jones,
*Founding Producer
and President*

Shane Peterman, *Producer*

Sally Soldo, *Company
Manager*

Katie Moyes Williams, *Schmidt
& Jones Awards Coordinator*



Funded in part by the city of Irving through the Irving Arts Board



Everyday is Earthday at Breeze Energy.

Join us on our mission to Protect the Planet!

At Breeze Energy we are on a mission- a mission to Protect the Planet -one Breeze at a time! When you choose to go with the wind from Breeze Energy, you show the planet you care. Choosing wind for electricity at your home or office reduces the demand for fossil fuel sources which in turn reduces fossil fuels' negative impact on our climate, the air we breathe, the water we need.

Breeze Energy delivers 100% Green, 100% Texas wind energy- in comparison our competitors are owned by companies that generate over 80% of their electricity from fossil fuels coal, gas and nuclear energy.

Join the movement to Protect the Planet and Switch today!

With our affordable prices,
it's easy being Green.
Breeze™ Energy 12 mo. plan
7.1¢ per kwh*

*Breeze 12 month plan as of 4/1/17.

Breeze
energy

100% Pure. 100% Green. 100% Texas Wind Energy.
BreezeEnergy.com



Like us on Facebook and comment #springbreeze for a chance to **win free tickets** to the Dallas Zoo's Safari Nights powered by Breeze Energy. The hippest concert series in town! May 6-July 15:

LYRIC STAGE

SEASON 25

NEW SEASON!
NEW VENUES!
NEW SHOWS!

Dallas Divas WITH THE DALLAS Winds

Meyerson Symphony Center

29 SEP 2017

Disney's THE HUNCHBACK OF NOTRE DAME

REGIONAL PREMIERE

The Majestic Theatre

17-19 NOV 2017

Daddy Long Legs

REGIONAL PREMIERE

From the director of
Les Misérables

The Majestic Theatre

19-21 JAN 2018

GUYS AND DOLLS

The Majestic Theatre

8-10 JUN 2018